

ibride

PRESS RELEASE

FALL-WINTER 2025



ibride COLISÉE

ROMA COLLECTION
COFFEE TABLE

DESIGN FREDERIK DELBART, 2025



COLISÉE, THE FIRST PIECE IN THE ROMA COLLECTION

With Roma, Ibride unveils a new collection designed by Belgian designer Frederik Delbart, an exploration of the architectural legacy of Rome's most ancient monuments.

The first creation of this tribute collection, the Colisée coffee table, draws its name and essence from the monumental architecture of

the largest amphitheater ever built in the Roman Empire during the first century AD. Its circular silhouette recalls the iconic form, while the rhythm of superposed arcades is reinterpreted here through an openwork base in solid oak, supple and fluid, that enfolds the tabletop like a ribbon.



This generously sized coffee table (Ø 80 cm x H 35 cm) is designed for everyday use. Its top in high-density Fenix

laminates, made in Italy, resists water, scratches and fingerprints, and comes in Verde Comodoro, a deep and muted shade.

Crafted in Ibride's Besançon workshop, Colisée embodies an exclusive openwork technique that makes solid oak supple and graphic, highlighting a light-toned oak sourced from Franche-Comté. Both the engraving and cutting of the tabletop are carried out in-house, reinforcing the local roots and artisanal mastery of the design house.

USE

Indoor

FRENCH MANUFACTURING

Crafted in our Besançon workshop.

MATERIALS

Solid oak and Fenix.



COLISÉE

DIMENSIONS : Ø80 X H.35 CM

EXCL. VAT PRICE : 1 041,67 €

INCL. VAT PRICE: 1 250,00 €

PRESS CONTACT : Gladys Verchère - gladys@ibride.fr



SHOP ONLINE AT
[IBRIDE-DESIGN.COM](https://ibride-design.com)

ibride MASSIMO

ROMA COLLECTION
CONSOLE

DESIGN FREDERIK DELBART, 2025



MASSIMO — A HIPPODROME REIMAGINED AS A CONSOLE

Elongated and graceful, Massimo reinterprets the ancient hippodrome of the Palatine, the Circus Maximus (599 BC), as a sculptural piece of furniture anchored in the present day.

Its oval, stretched and shallow silhouette recalls the monumental track where antique chariots once raced, here translated into a design full of tension, balance and lightness.



Like its two counterparts, Colisée and Petit Colisée, the console rests on an openwork solid oak base, shaped through a woodworking savoir-faire unique to the Ibride design house.

This carpentry work gives rise to a sequence of supple arcatures that delicately embrace the two tiers. Made in Fenix Verde Comodoro, the shelves combine strength for everyday use with visual depth, their matte, velvety finish enhancing both resilience and elegance.

The upper shelf is designed to host everyday objects kept within reach, while the lower level, more discreet yet generous, naturally lends itself to the staging of plants, books or singular pieces.

USE

Indoor

FRENCH MANUFACTURING

Crafted in our Besançon workshop

MATERIALS

Solid oak and Fenix



MASSIMO

DIMENSIONS : L.122 X P.42 X H.92 CM

EXCL. VAT PRICE : 1 916,67 €

INCL. VAT PRICE: 2 300,00 €



ibride

PETIT COLISÉE

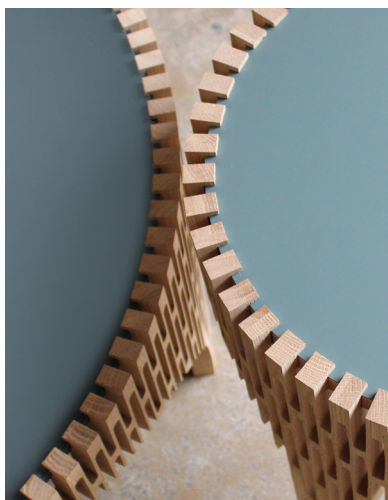
ROMA COLLECTION
COFFEE TABLE

DESIGN FREDERIK DELBART, 2025



PETIT COLISÉE REVEALS AN AIRY TRIPOD BASE

With the Roma collection, Ibride continues its exploration of the architectural legacy of ancient Rome through the vision of Belgian designer Frederik Delbart. Following Colisée, the generously sized coffee table, the house now presents Petit Colisée, a more intimate variation inspired this time by the Castrense amphitheater of the 3rd century AD.



True to the circular form of its elder sister Colisée, it stands apart through more discreet proportions. Resting on a tripod base, three arches alone are enough to evoke the contained strength of the original amphitheater while ensuring stability within a light and airy design.

The openwork solid oak forms a supple, rhythmic structure, while the Fenix tabletop stands out with its matte finish and deep Verde Comodoro shade.

Crafted in Ibride's Besançon workshop, Petit Colisée employs the same exclusive openwork technique as the rest of the Roma collection, transforming solid oak into a supple and graphic material. The light-toned oak is sourced from Franche-Comté, affirming both the local roots and the artisanal exactingness of the house.

In this way, Petit Colisée condenses the momentum of a monument into the presence of a small side table, standing at the crossroads between sculptural gesture and functional object.

USE

Indoor

FRENCH MANUFACTURING

Crafted in our Besançon workshop.

MATERIALS

Solid oak and Fenix.



PETIT COLISÉE

DIMENSIONS : Ø40 X H.45 CM

EXCL. VAT PRICE : 458,33 €

INCL. VAT PRICE: 550,00 €



SHOP ONLINE AT
[IBRIDE-DESIGN.COM](https://ibride-design.com)

PRESS CONTACT : Gladys Verchère - gladys@ibride.fr

ibride

THE GREAT RAVENS

DECORATIVE RAVENS

DESIGN RACHEL
& BENOÎT CONVERS



THE GREAT RAVENS BLACK WOOD – A NEW FLIGHT BY IBRIDE

With The Great Ravens, the brand brings together for the first time six black wood models in complementary postures. Two are designed to be suspended, literally flying through the room, while the others settle with assurance on a piece of furniture, a shelf or a windowsill.



AN ANIMAL PRESENCE WITHIN INTERIORS

Conceived by Benoît Convers, these totemic birds embody a silent form of life. Their silhouettes, at once familiar and enigmatic, blend into the space as though they had always belonged there. The deep black that cloaks them accentuates their outline, catches the light with restraint, and affirms a return to the essential: raw material, a poised stance, a powerful aura.

To be suspended, displayed or gently tamed, The Great Ravens offer a free and inhabited visual narrative, reaffirming the singular bond Ibride cultivates between nature and design.



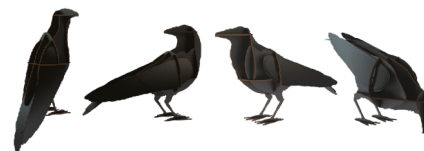
MATERIALS

FSC-certified birch, printed with Greenguard Gold and EN 71-3 certified inks.

AVAILABLE IN BLACK

FRENCH MANUFACTURING

Crafted in our Besançon workshop.



ALFRED, GUSTAV, EDGAR & JACK

ALFRED : L.20 X P.15 X H.45 CM

EDGAR : L.43 X P.12 X H.26 CM

GUSTAV : L.40 X P.12 X H.28 CM

JACK : L.46 X P.13 X H.24 CM

EXCL. VAT PRICE : 151,67 €

INCL. VAT PRICE : 182,00 €



ADAM & KARL

ADAM :

KARL : L.56 X P.40 X H.60 CM

EXCL. VAT PRICE : 160,00 €

INCL. VAT PRICE : 192,00 €



SHOP ONLINE AT
IBRIDE-DESIGN.COM

PRESS CONTACT : Gladys Verchère - gladys@ibride.fr

ibride ZITA

GALERIE DE PORTRAITS COLLECTION

DESIGN RACHEL CONVERS, 2025



ZITA, A NEW PRESENCE IN THE GALERIE DE PORTRAITS

With Zita, the Galerie de Portraits welcomes a new heroine, rebellious and vibrant. Conceived by Rachel Convers, she breaks away from the rigidity of traditional poses and allows herself to be captured in an uncertain movement, as if caught mid-dance. "The idea was to disrupt the rigid codes of posing," explains the designer.

Gypsy, performer, street dancer or fortune teller, Zita exudes an oriental charm, heightened by her pale complexion that lends her an air of distinction. Seductive and daring, she remains untamed, slightly provocative, with the independent spirit of a cat. Behind her delicate features, her gaze hints at the unsuspected strength of a predator.



The feather she wears speaks of this duality: a playful and mischievous accessory, yet also a reminder of her origin, torn from the plumage of a bird.

The graphic composition, designed with meticulous attention to detail, embraces the ogival shape of the tray.

The gypsy, performer, street dancer or fortune teller, Zita exudes an oriental charm, heightened by her pale complexion that lends her an air of distinction. Seductive and daring, she remains untamed, slightly provocative, with the independent spirit of a cat. Behind her delicate features, her gaze hints at the unsuspected strength of a predator.

Her crossed arms frame the rosy tip of her nose, while the drapery enhances the bare breast it reveals.

A character at once poetic, energetic and mysterious, true to the singular universe of Ibride.

USE

Serving tray, dishwasher safe (water resistant).

FRENCH MANUFACTURING

Molded in Sweden, then cut by a local partner in France.

MATERIAL

Birch laminate



ZITA

DIMENSIONS : L.45 X H.63 CM

EXCL. VAT PRICE : 140,83 €

INCL. VAT PRICE: 169,00 €



SHOP ONLINE AT
IBRIDE-DESIGN.COM

PRESS CONTACT : Gladys Verchère - gladys@ibride.fr

ibride BABY ALPAGA

ALPAGA FAMILY
COLLECTION
COLOR CAPSULE

DESIGN RACHEL
& BENOIT CONVERS, 2025

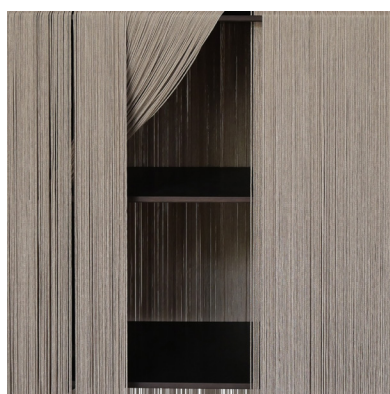


BABY ALPAGA DRESSES UP FOR THE FESTIVE SEASON

COLOR CAPSULE 2025: PEARL GLOW & SILVER MIST

For the holiday season, Baby Alpaga, Ibride's iconic fringed piece, reveals itself in two new capsule shades: Pearl Glow and Silver Mist. These luminous finishes are conceived as a nod to festive nights and the timeless elegance of the 1920s.

Baby Alpaga finds its place everywhere: beside a sofa, at the foot of a bed, in a reading nook or an entrance. Inspired by the gentle creature whose name it bears, it is distinguished by its long, silky fringes that invite touch as much as gaze. Behind them lies a hidden



compartment, accessible through a pivoting flap, designed to keep precious objects and intimate treasures safe.

For this capsule edition, the deep black structure of the piece plays in contrast with its new finishes: Pearl Glow, a delicate pearly white with nacreous reflections, and Silver Mist, an airy gray with subtle, vapor-like hues.

Each piece in this capsule edition is individually numbered and engraved, emphasizing its exclusive and precious character. Delivered with its own care comb, Baby Alpaga retains its tactile and playful nature. Whether in Pearl Glow or Silver Mist, it becomes a seasonal ally for interiors, always ready to keep and shimmer with the secrets entrusted to it.

USE

Indoor

FRENCH MANUFACTURING.

Crafted in our Besançon workshop.

MATERIALS

Structure in high pressure laminate and viscose fringes



BABY ALPAGA

DIMENSIONS : H.72 X L.66 X P.27CM

EXCL. VAT PRICE : 768,33 €

INCL. VAT PRICE: 922,00 €



ibride

SOLID OAK

NEW MATERIAL



SOLID OAK, A NEW MATERIAL AT THE HEART OF IBRIDE'S CREATIONS

Ibribe expands its universe with the arrival of a raw and timeless material: solid oak. A return to origins that resonates with the very identity of the house, established at the edge of a Franche-Comté forest where nature remains a constant source of inspiration.

Chosen for its strength and authenticity, oak reveals the unique grain of each piece of wood and brings nature into interior spaces. Its presence offers both tactile and visual warmth, in dialogue with the sculptural lines of Ibribe's creations.



A MATERIAL SERVING THE COLLECTIONS

This material enriches several of Ibribe's emblematic worlds. The new Roma collection takes root in oak through a console and two coffee tables, where the wood underscores the architectural strength of lines inspired by Antiquity. In Mobilier de Compagnie, Diva Lucia is reinterpreted in oak, offering a gentle and natural

variation of the companion animal that has become a house icon. Finally, the Gardenia collection extends with its Ø60 cm coffee table, whose organic presence finds its rightful place in interiors.

USE

Indoor

FRENCH MANUFACTURING

Crafted in our Besançon workshop

MATERIAL

Oak, sourced in France



TABLE BASSE GARDENIA 60

DIMENSIONS : H.72 X L.66 X P.27CM

INCL. VAT PRICE: 810,00 €



DIVA LUCIA

DIMENSIONS : H.72 X L.66 X P.27CM

INCL. VAT PRICE: 1 680,00 €



MASSIMO - COLISÉE - PETIT COLISÉE

INCL. VAT PRICE: 2300,00 € - 1250,00€ - 550,00€



ibride

CORTEN STEEL

NEW MATERIAL



IBRIDE INTRODUCES CORTEN STEEL INTO ITS MOBILIER DE COMPAGNIE COLLECTION

Ibide enriches its emblematic Mobilier de Compagnie collection with the arrival of a new material: Corten steel. Renowned for its evolving patina and resistance, this metal transforms over time when exposed to the elements, giving each piece a living and unique dimension. Designed for outdoor use, it integrates naturally into gardens, terraces and landscapes, where it converses with vegetation and light.

Corten steel now adorns four iconic models: the bears Joe and Junior, along with the does Diane and Callisto. Each of these animal presences, already totems of the Ibide bestiary, gains a new depth



when clad in a material that evokes the passage of time and the force of nature. Its surface evolves with the seasons, developing a patina of brown and copper hues that shift with light, rain and wind. This natural transformation resonates with the spirit of Mobilier de Compagnie, conceived as true presences that take root in a place and belong to it.

With this new material, Ibide's animal figures continue to reinvent themselves, affirming their role as timeless companions, bearers of poetic presence in a garden or on a terrace.

USE

Outdoor

FRENCH MANUFACTURING

Cut by a local partner and assembly in our workshop

MATERIAL

Corten steel, sourced in France.



JOE CORTEN

DIMENSIONS : L.206 X P.86 X H.155 CM

INCL. VAT PRICE: 9 670,00 €



JUNIOR CORTEN

DIMENSIONS : L.180 X P.60 X H.95 CM

INCL. VAT PRICE: 6 480,00 €



DIANE CORTEN

DIMENSIONS : L.96 X P.34 X H.92 CM

INCL. VAT PRICE: 3 680,00 €



CALLISTO CORTEN

DIMENSIONS : L.96 X P.34 X H.150 CM

INCL. VAT PRICE: 3 780,00 €



SHOP ONLINE AT
[IBRIDE-DESIGN.COM](https://ibride-design.com)